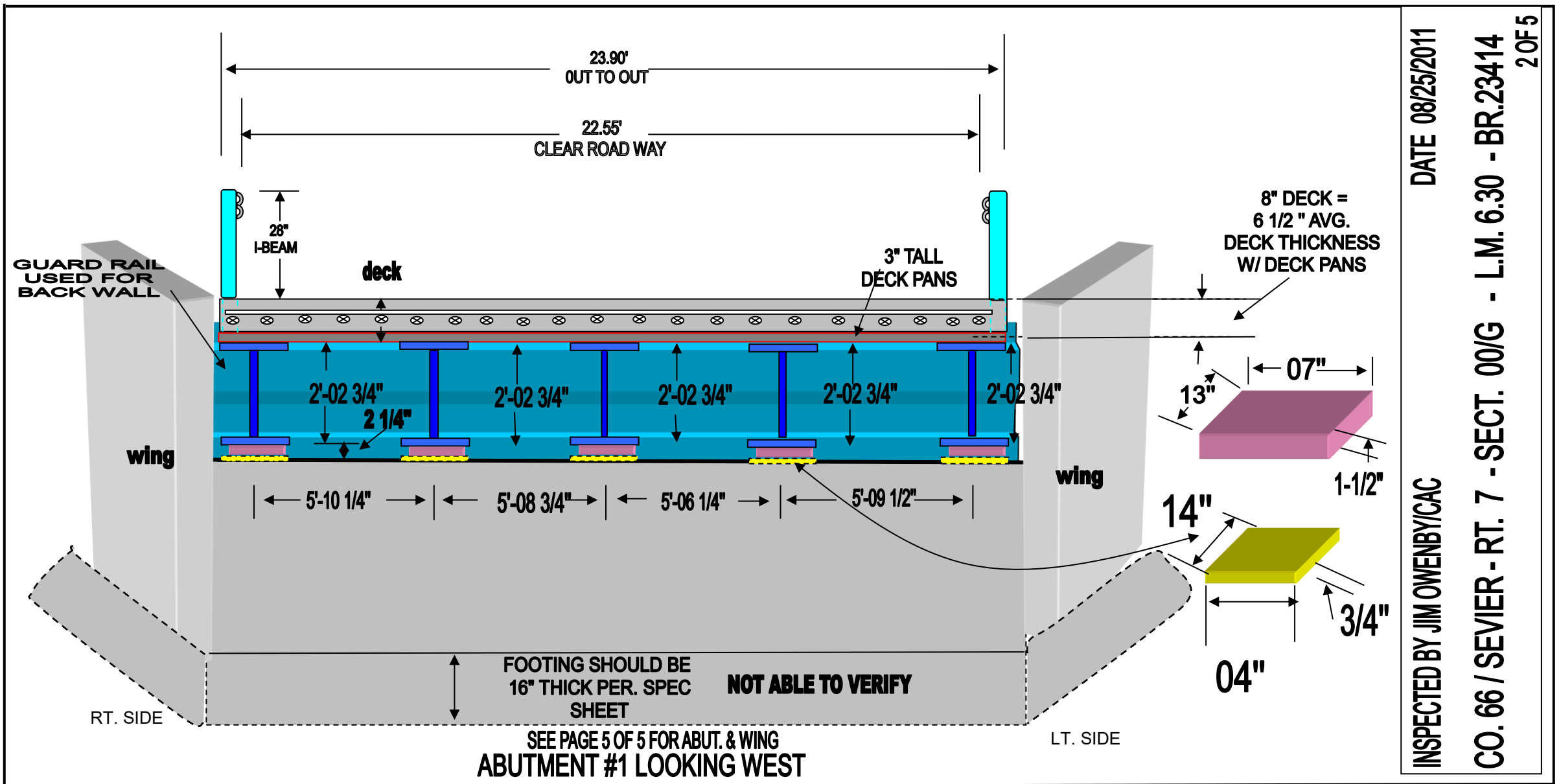


INSPECTED BY JIM OWENBY / CAC

DATE 08/25/2011

CO. 66 / SEVIER - RT. 7- SECT. 00/G - L.M. 6.30 - BR.23414

1 OF 5

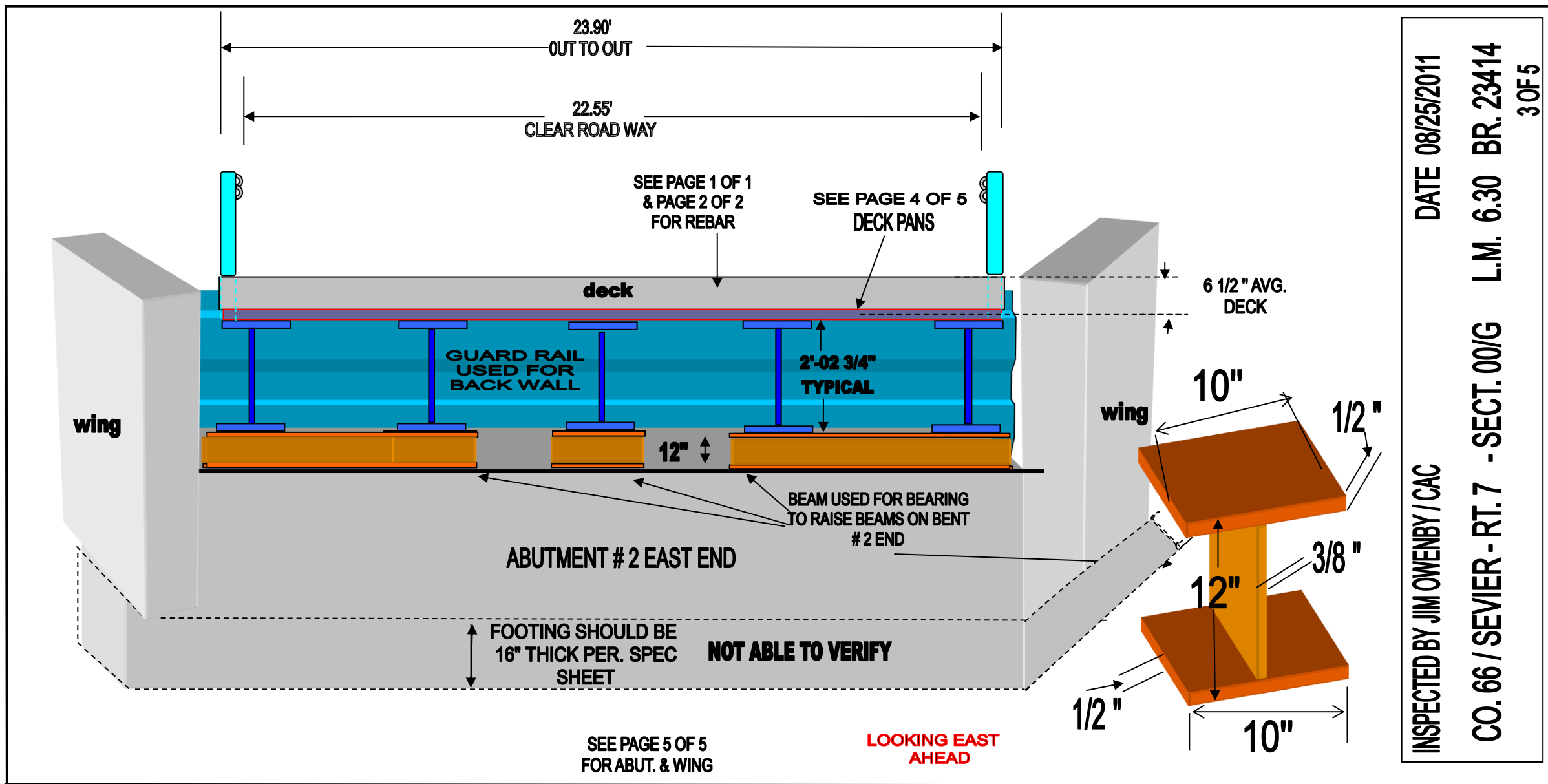


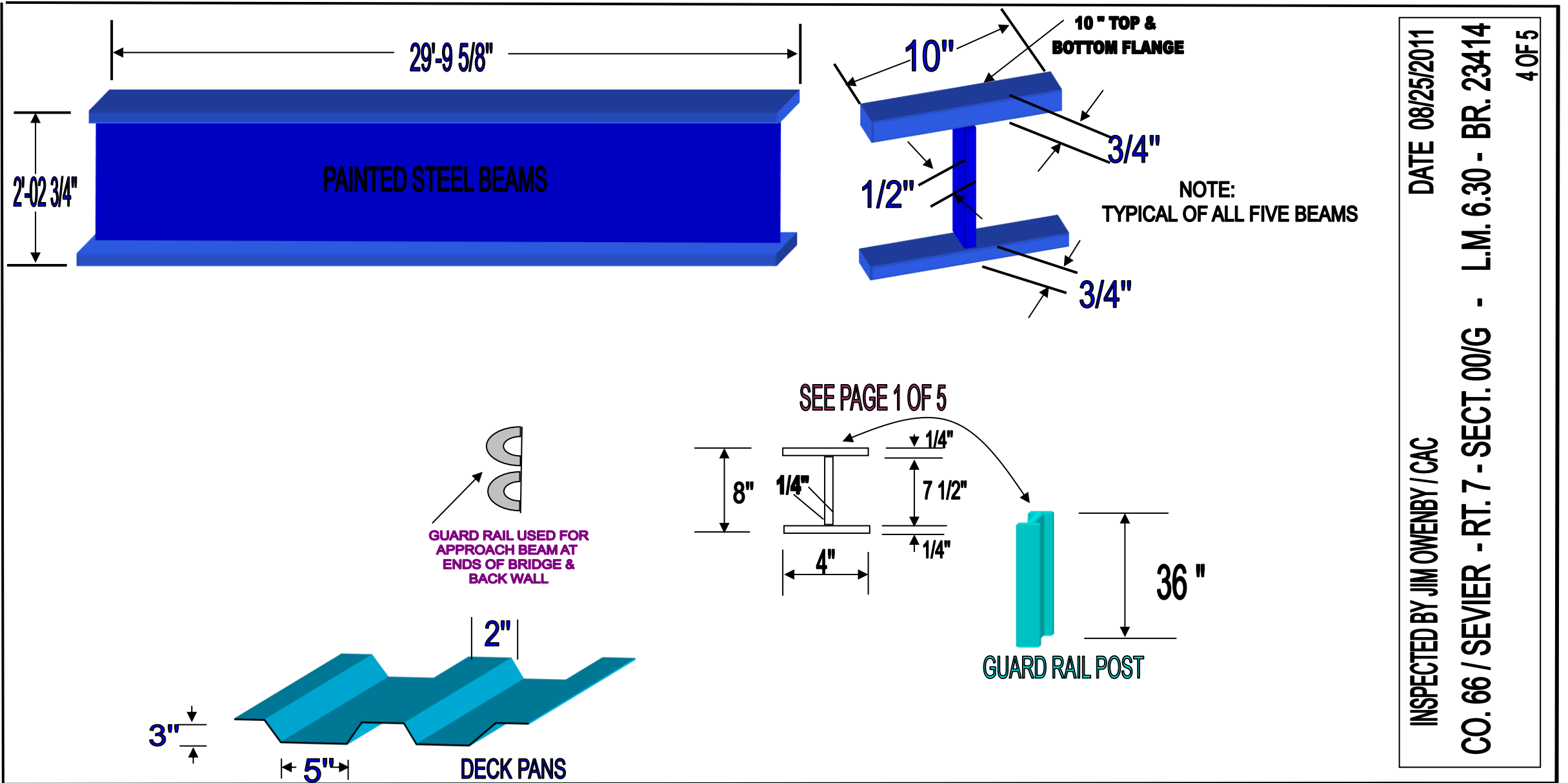
DATE 08/25/2011

INSPECTED BY JIM OWENBY/CAC

CO. 66 / SEVIER - RT. 7 - SECT. 00/G - L.M. 6.30 - BR.23414

20F5



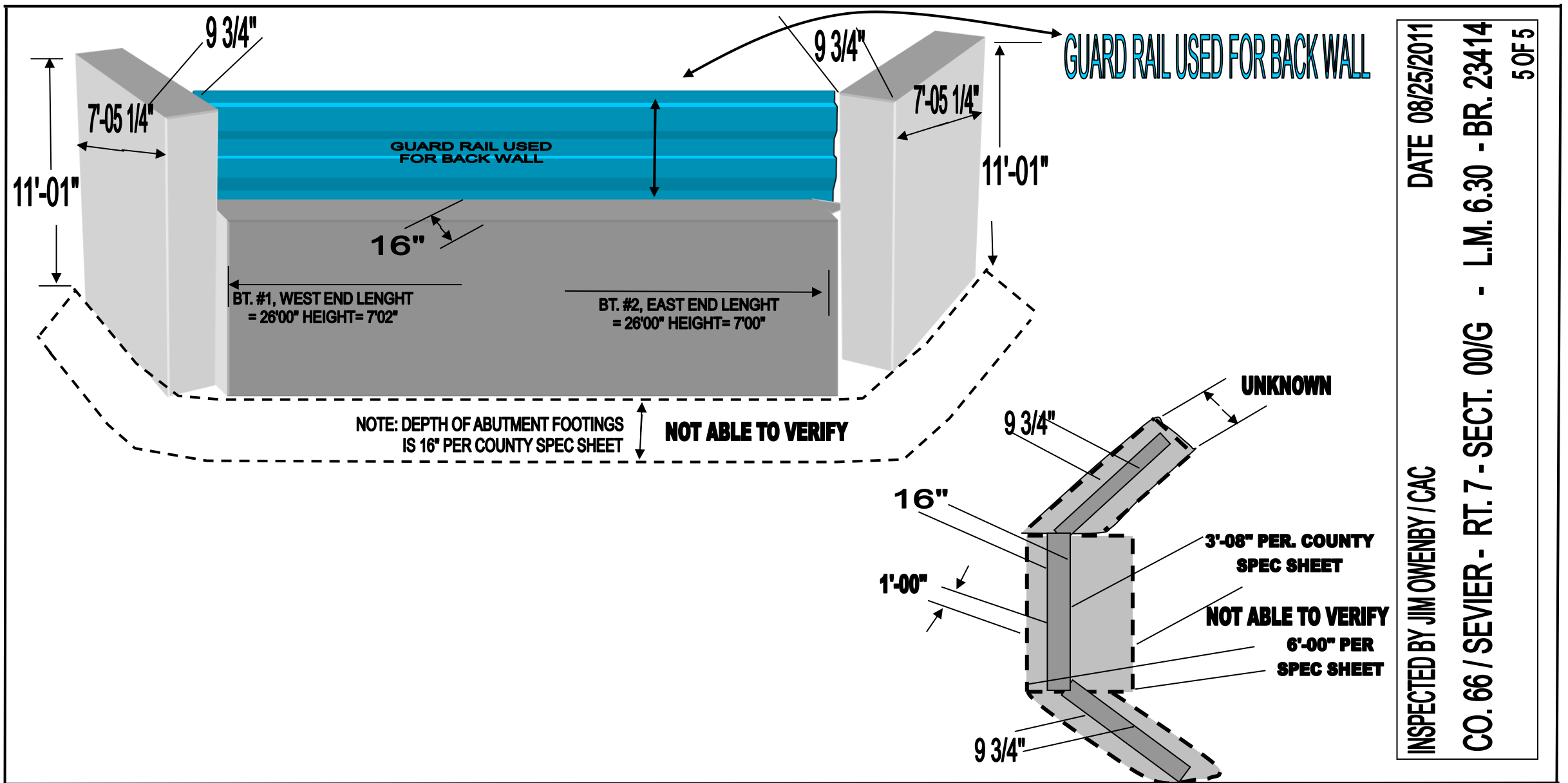


INSPECTED BY JIM OWENBY / CAC

DATE 08/25/2011

CO. 66 / SEVIER - RT. 7 - SECT. 00/G - L.M. 6.30 - BR. 23414

4 OF 5



DATE 08/25/2011

INSPECTED BY JIM OWENBY / CAC

CO. 66 / SEVIER - RT. 7 - SECT. 00/G - L.M. 6.30 - BR. 23414

50F5